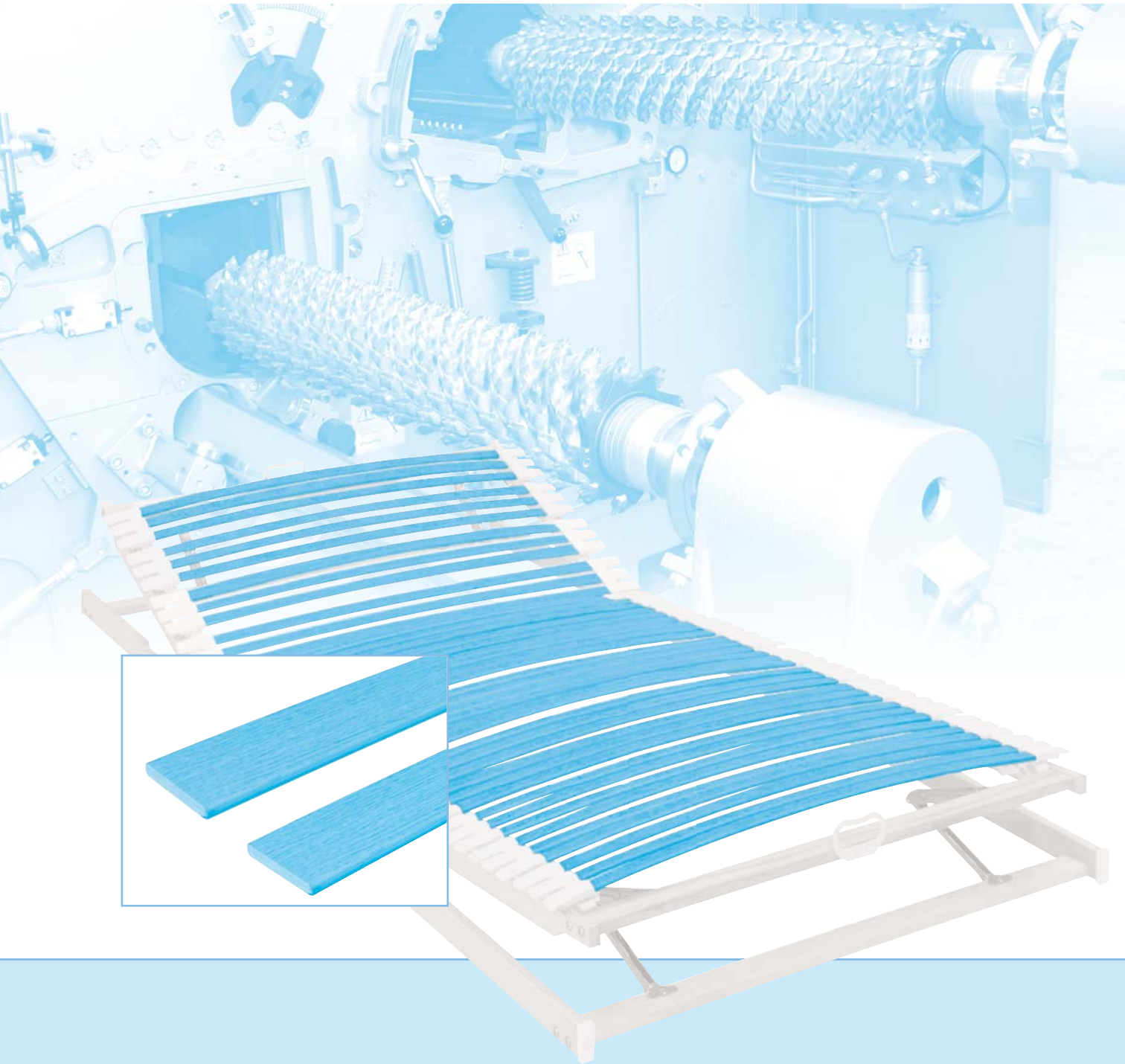




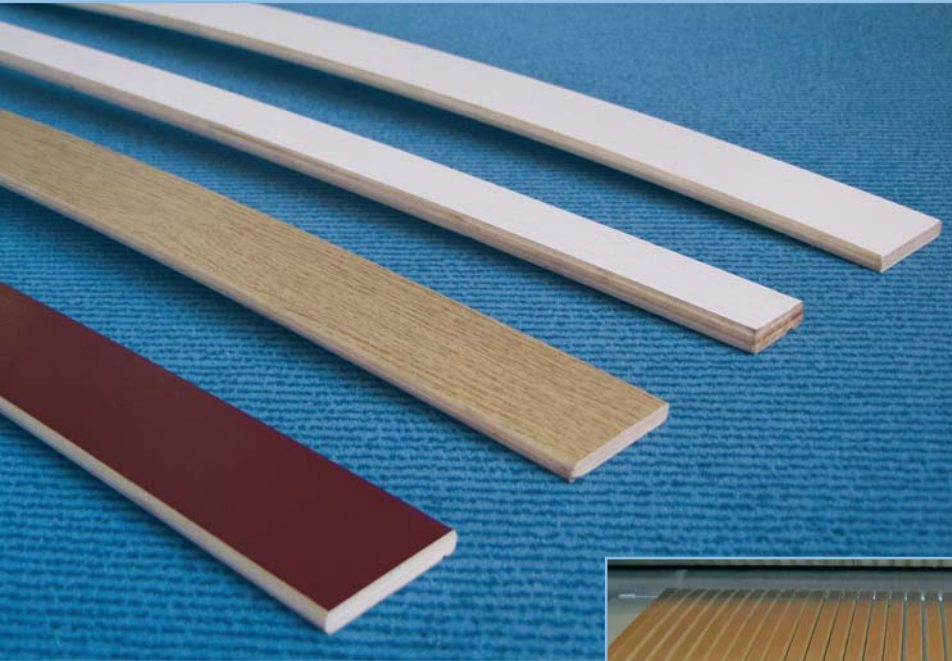
Maschinenfabrik GmbH & Co. KG



# Profiling Rip Saw for Bed Slats



## THE K34G-OUR – A MODIFIED MULTIRIP SAW FROM



The PAUL K34G-OUR has been specifically developed for ripping and profiling curved bed slats.

The panels are ripped and profiled in a single pass which offers the following benefits:

Maximum profit through

- Saving several processing steps
- Significantly increasing productivity

Fig. 1 Different bed slat designs



### ▶ THE SAWING TECHNIQUE

Thanks to the curved arrangement of the feed rollers the K34G-OUR is suitable for processing curved panels with a bending radius of approx. 3–9 m into bed slats. The machine features a top and a bottom saw shaft rotating against the feed. Both shafts are designed for use with special profiling tools.



Fig. 2 Saw shafts of the K34G-OUR set up with profiling tools

# THE K34 SERIES



Fig. 3 Model K34G-OUR

## EASY OPERATION AND ADJUSTMENT

Digital cutting height indicators are provided to ensure exact positioning of the saw shafts. Alignment of the tools on the bottom shaft with

the upper tools is achieved by an axial displacement of the bottom main bearing rocker. Manual or fully automatic loading is possible.

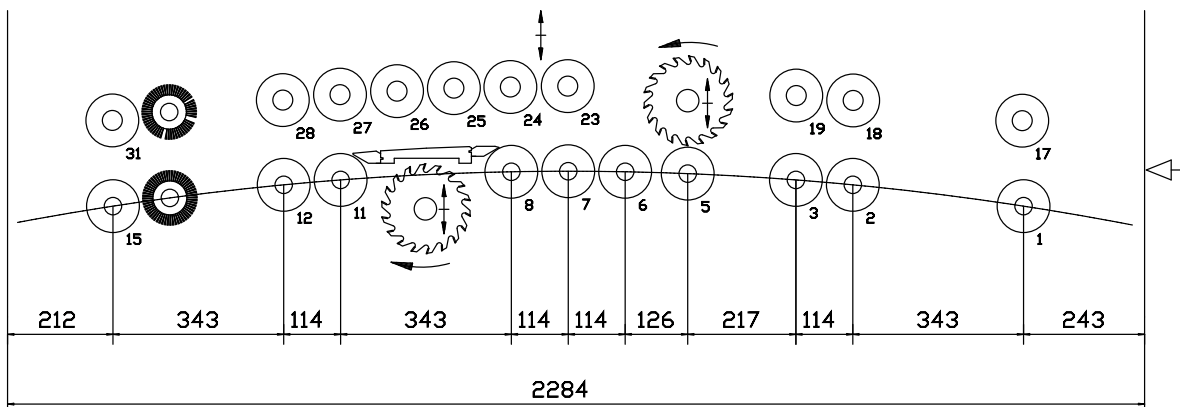


Fig. 4 Schematic view of K34G-OUR

# TECHNICAL DATA

| K34G-OUR                                      |                  |
|---|------------------|
| Nominal opening width                         | 800   1200 mm    |
| Workpiece thickness (standard)                | 8–12 mm          |
| Saw shaft diameter                            | 75   100 mm      |
| Top rollers                                   | 10               |
| Bottom rollers                                | 10               |
| Roller drive                                  | Cardan           |
| Feed speed<br>frequency-controlled (standard) | 15–50 m/min.     |
| Min. workpiece length                         | 500 mm           |
| Max. driving power                            | 90 kW (4500 rpm) |
| Dimensions:                                   |                  |
| Working height (standard)                     | 800 mm           |
| Length / height approx.                       | 2384   1430 mm   |
| Width, approx.                                | 2240   2640 mm   |
| Weight, approx.                               | 6600   7000 kg   |

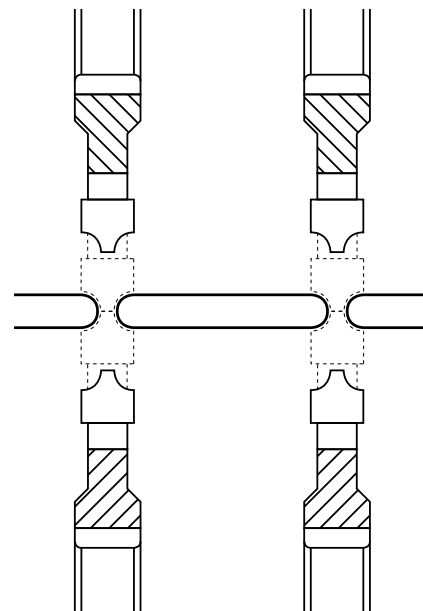


Fig. 5 Profiling of bed slats

0407

Error and modification reserved.

PAUL-Info B 116.36/1



## LAYOUT

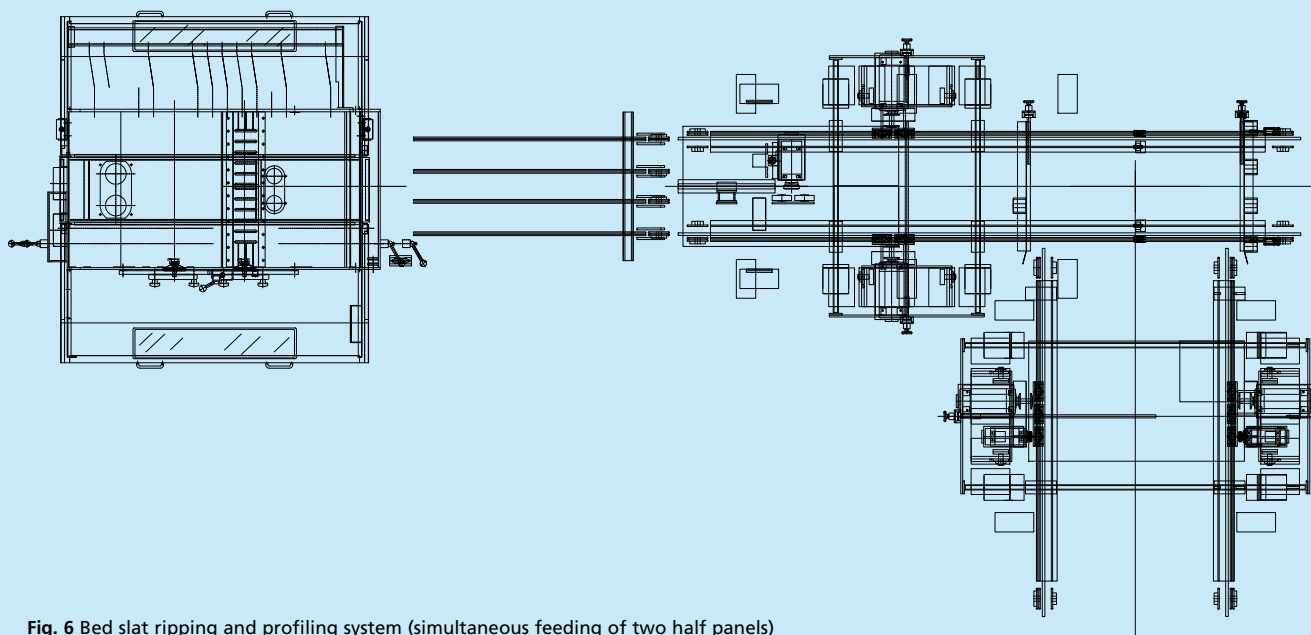


Fig. 6 Bed slat ripping and profiling system (simultaneous feeding of two half panels)